



200# (59mm) TFS Hard open End Gold and White Food packaging. Good closure

Our Product Introduction

Basic Information

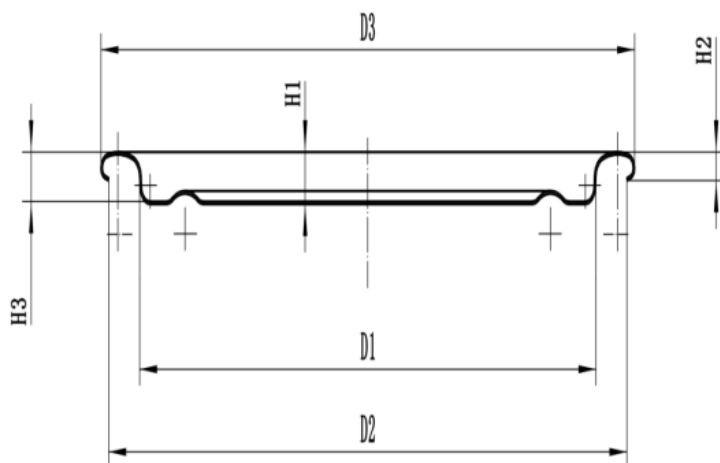
- Place of Origin: China
- Minimum Order Quantity: negotiable
- Packaging Details: Paper Sleeve & Stretch Film & Pallet/ Carton
- Delivery Time: 20-45 Days



Product Specification

- Design: Simple
- Usage: Food Packaging
- Compatibility: Fits Most Standard Food Cans
- Material: Tinplate
- Function: Sealing
- Shape: Round
- Highlight: 59mm Food packaging, 200# Food packaging, Gold Food packaging

Product Description



The outer diameter of the rolling edge (D3) is $59.05 \pm 0.20 \text{ mm}$

Inner diameter of flange (D2) $57.40 \pm 0.30 \text{ mm}$

Flange height (H2) 1.95 ± 0.10

Buried depth (H3) $3.00 \pm 0.10 \text{ mm}$

Fit diameter (D1) $49.80 \pm 0.10 \text{ mm}$

Indenter fits well with the company's indenter

Iron sheet thickness 0.18-0.20

Iron hardness T4CA/T4BA

Q:Can you send samples?

A:Of course, we can send samples to all parts of the world, our samples are free, but customers need to bear the courier costs.

Q:What product information do I need to provide?

A:You need to provide the purchased specifications (technical instructions and specification drawings are in our product description) coating and quantity.

Q:What are the shipping ports?

A:We ship from Tianjin Port, or according to your designated port.

Q:About product prices?

A:Prices vary from period to period due to cyclical changes in the price of raw materials. As we are the manufacturer, we will provide an affordable and satisfactory price.

Q: How long does your delivery time take?

A:In general, our delivery time is within 20-45 days, and may be delayed if the demand is extremely large or special circumstances occur.

Q:Can I go to your factory to visit?

A:Of course, we welcome customers from all over the world to visit our factory.



Tianjin Jiayi Haotian Industrial Co., Ltd



+86 15522765700



caivee@jiayi-packaging.com



jiayi-packaging.com

Dongxing Road, Beihuan Industrial Park, Jinghai Town, Jinghai District, Tianjin, China