



62.3mm TFS Tinplate Can Lids 209 Can Ends For Canned Food Packaging

Our Product Introduction

Basic Information

- Place of Origin: China
- Minimum Order Quantity: negotiable
- Packaging Details: Paper Sleeve & Stretch Film & Pallet/ Carton
- Delivery Time: 20-45 Days

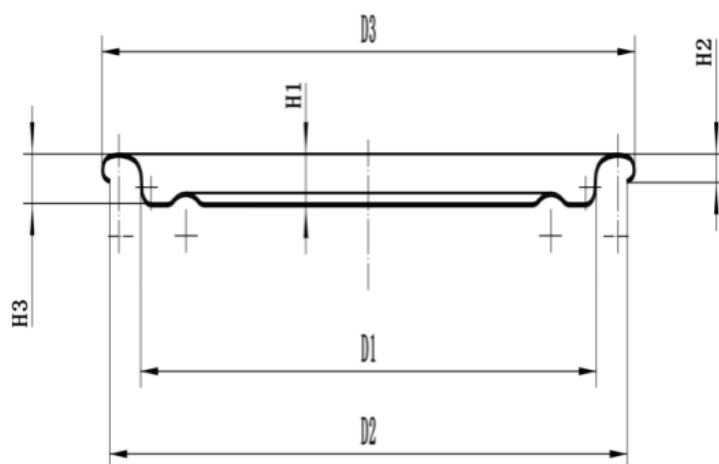


Product Specification

- Shape: Round
- Usage: Sealing Food Cans
- Functionality: Keeps Food Fresh And Prevents Spills
- Material: Tinplate
- Convenience: Lightweight And Portable
- Cost: Affordable
- Compatibility: Fits Most Standard Food Cans
- Highlight: **62.3mm tfs tinplate can lids,
tinplate 209 can ends,
canned food packaging can ends**

Product Description

209#(62.3mm) TFS Hard Open End White And Clear Food Can Lid.Food Packaging



The outer diameter of the rolling edge (D3) is $72.20 \pm 0.10 \text{ mm}$

Inner diameter of flange (D2) $70.40 \pm 0.30 \text{ mm}$

Flange height (H2) 1.95 ± 0.10

Buried depth (H3) $3.00 \pm 0.10 \text{ mm}$

Can diameter (D1) $62.35 \pm 0.10 \text{ mm}$

Indenter fits well with the company's indenter

Thickness of iron sheet 0.19-0.20

Iron hardness T4CA/T4BA



Tianjin Jiayi Haotian Industrial Co., Ltd



+86 15522765700



caivee@jiayi-packaging.com



jiayi-packaging.com

Dongxing Road, Beihuan Industrial Park, Jinghai Town, Jinghai District, Tianjin, China